



Pushing Performance



People | Power | Partnership

## HARTING MICA SMB Container

---

1<sup>st</sup> Edition 2016, 11/16  
Doc No 20 95 100 0003 / 99.01

© HARTING IT Software Development, Espelkamp

All rights reserved, including those of the translation.

No part of this manual may be reproduced in any form (print, photocopy, microfilm or any other process), processed, duplicated or distributed by means of electronic systems without the written permission of HARTING Electric GmbH & Co. KG, Espelkamp.

Subject to alterations without notice.

This application note explains how to use the SMB container.

# Contents

<b>Contents .....</b>	<b>4</b>
<b>1 SMB Container Basics .....</b>	<b>5</b>
<b>1.1 Overview .....</b>	<b>5</b>
<b>1.2 Installation .....</b>	<b>5</b>
<b>2 User-Interface of the SMB Container .....</b>	<b>6</b>
<b>3 Installing a <math>\mu</math>SD Card.....</b>	<b>7</b>
<b>4 Setting Up a <math>\mu</math>SD Card for the First Time.....</b>	<b>8</b>

# 1 SMB Container Basics

## 1.1 Overview

The SMB container lets you configure the optional  $\mu$ SD card in a MICA and make it available as a SMB share from other containers or over a network.

## 1.2 Installation

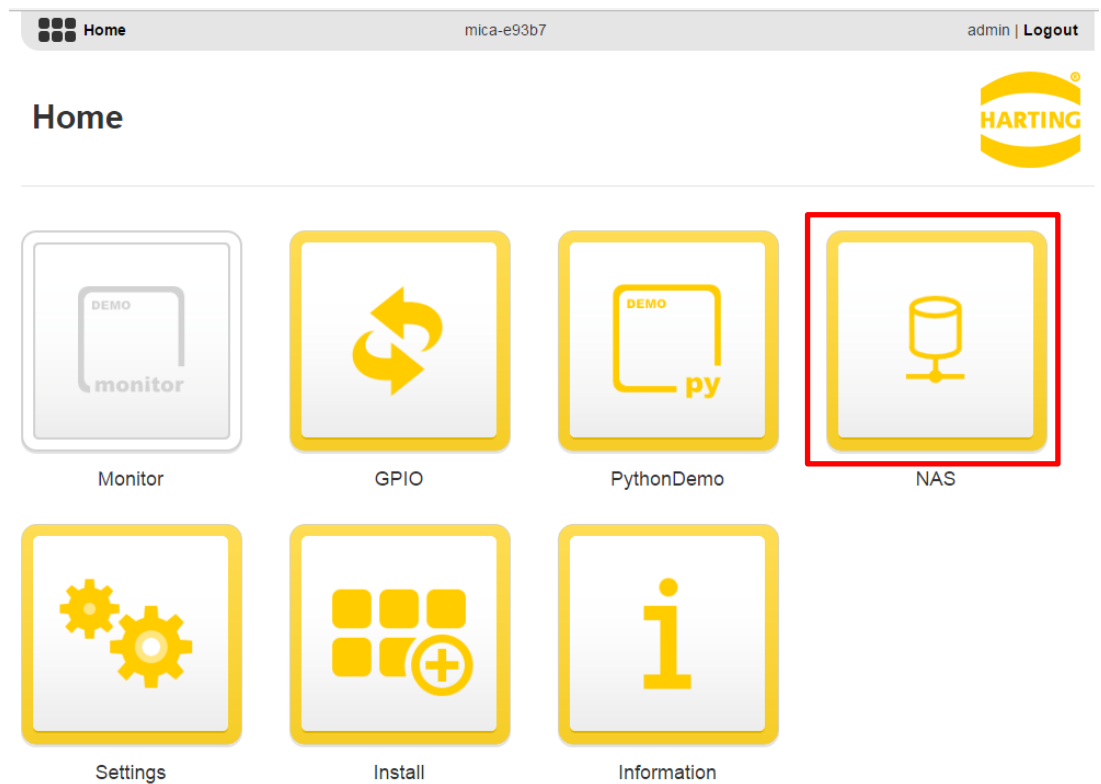
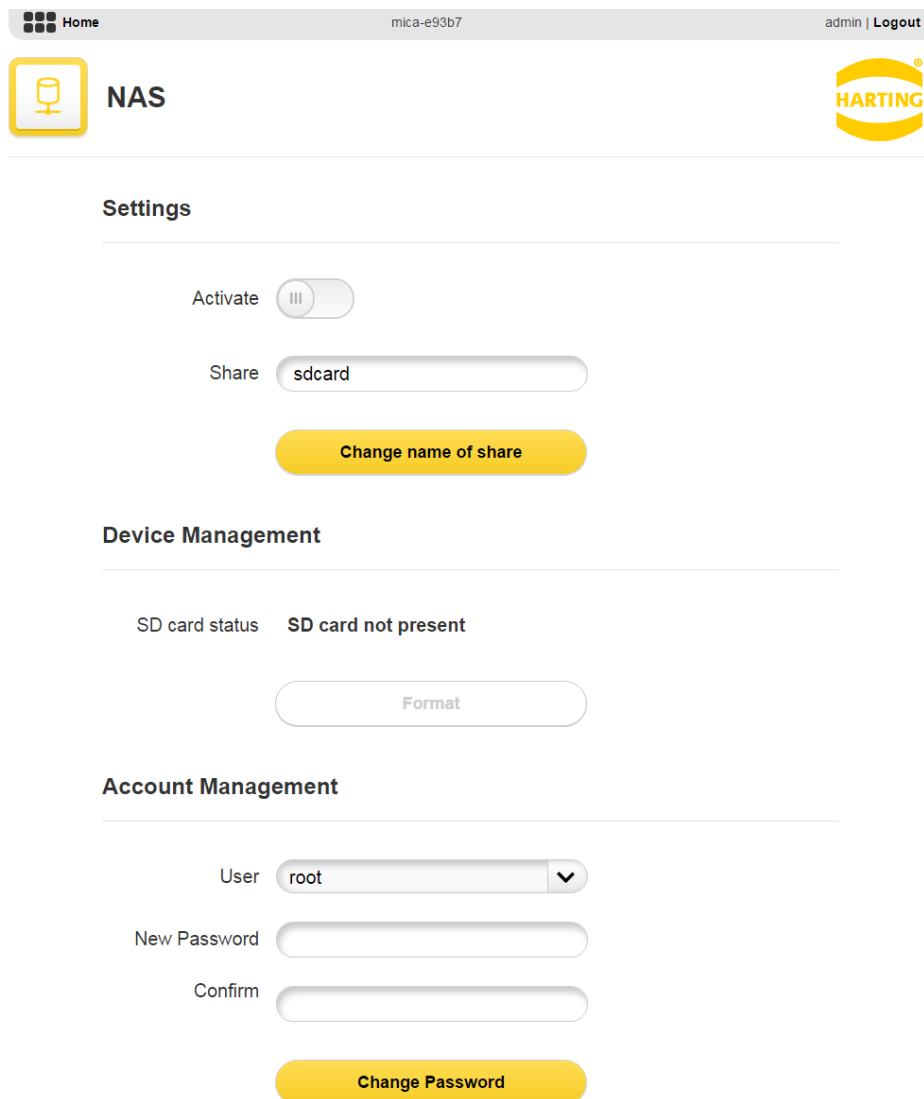


Figure 1: MICA Homescreen Including the SMB Container

Install the SMB container following the standard MICA installation procedure described in section 1.2 of the *MICA Programming Guide*.

## 1.3 User-Interface of the SMB Container



The screenshot displays the user interface of the SMB Container. At the top, there is a navigation bar with a 'Home' icon, the device ID 'mica-e93b7', and a user profile 'admin | Logout'. Below the navigation bar, there is a 'NAS' section with a server icon and the HARTING logo. The main content area is divided into three sections: 'Settings', 'Device Management', and 'Account Management'. The 'Settings' section includes an 'Activate' toggle switch (currently off), a 'Share' text input field containing 'sdc card', and a yellow 'Change name of share' button. The 'Device Management' section shows 'SD card status' as 'SD card not present' and a greyed-out 'Format' button. The 'Account Management' section features a 'User' dropdown menu set to 'root', 'New Password' and 'Confirm' text input fields, and a yellow 'Change Password' button.

Figure 2: User Interface of the SMB Container

Use **Settings** to activate and deactivate the SMB service and name or rename the share.

**Device Management** shows whether the  $\mu$ SD card is present or not and lets you format the  $\mu$ SD card to match the MICA operating system.

Use **Account Management** to set a root password for the SMB share.

## 2 Installing a $\mu$ SD Card

Make sure your MICA is powered down and disconnected from any power supply, either 12/24V or Power over Ethernet. To prevent damage from static electricity, either wear an antistatic wrist strap or touch the MICA housing before inserting or removing a  $\mu$ SD card.

**Note:** Not all commercially available  $\mu$ SD cards are suitable for industrial environments and temperature ranges. If you are not using a  $\mu$ SD card supplied by HARTING, make sure to use a card that matches your environmental requirements.

Use a Torx 8 screwdriver or bit to unscrew the two screws securing the  $\mu$ SD card cover at the back of your MICA.

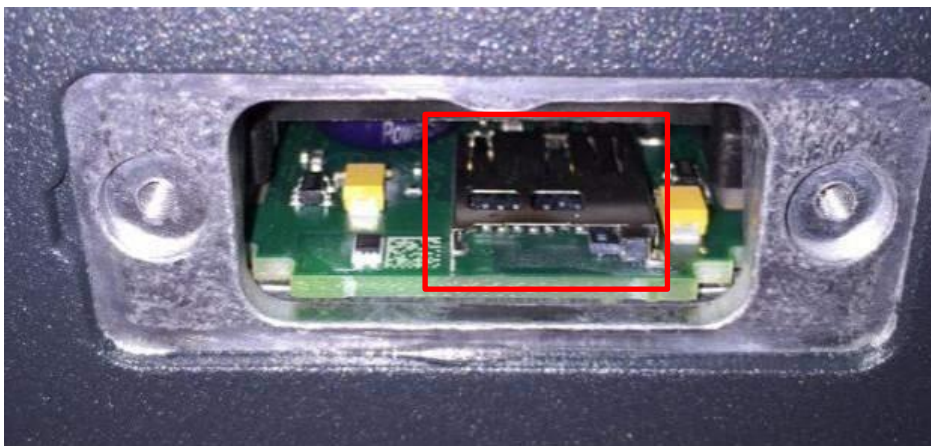


Figure 3:  $\mu$ SD Card slot

Insert the  $\mu$ SD card into the  $\mu$ SD card slot behind the  $\mu$ SD card cover.

Re-attach the  $\mu$ SD card cover, being careful to align the notch on the top with the rib in the aluminum housing and tighten the screws to 0.9Nm (plastic cover on MICA rev. 1), respectively 1.25Nm (aluminum cover on MICA rev. 2)

**Warning:** attaching the SD card cover incorrectly may compromise the waterproofness of the housing and invalidates the manufacturer's warranty.

Reconnect your MICA to the power supply and the network.

### 3 Setting Up a $\mu$ SD Card for the First Time

Format the  $\mu$ SD card from the NAS container if necessary. After formatting all previous data on it will be lost. Then, name the share and set a root password.

To access the share over the network by via the MICA base IP address or mdns name.

To access the share from a container installed on the MICA using cifs, install the cifs tools, create a directory for the share via, for example,

```
mkdir SMB
```

and installing cifs utils and mounting the share there by:

```
mount -t cifs //<MICA ip-address>/< $\mu$ SDcard name> SMB
```